

185 HPI SERIES

Alternators



DEPENDABLE, HIGH-POWER SOLUTIONS

APS 185 HPI Series alternators provide stable, 28-volt output current to power the on-vehicle equipment you need to get the job done.

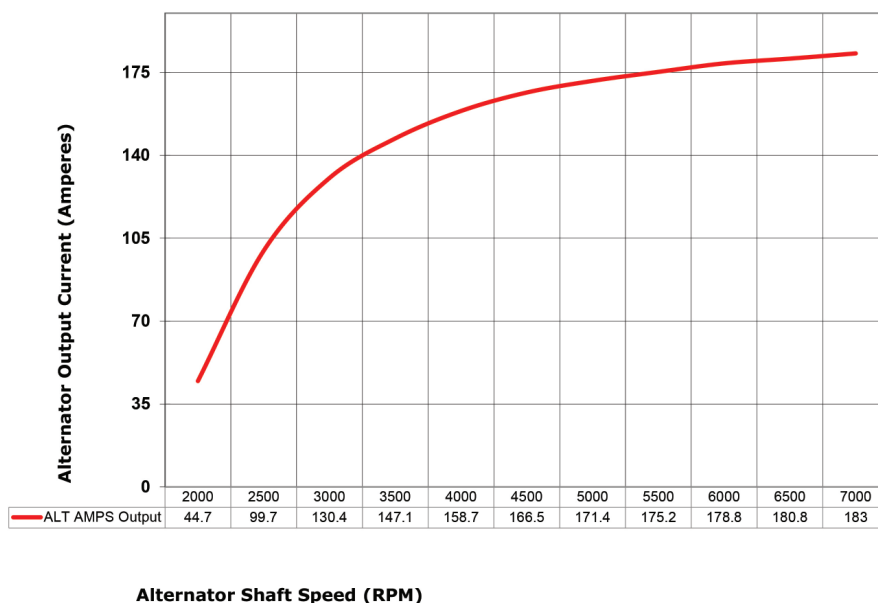
Available for diverse applications, the 185 HPI Series is generally used in the secondary alternator position with APS bracketry.

KEY FEATURES

- Quick battery charging
- Stator and rotor insulation tested to 600 volts
- Small slip-ring diameter prevents wear and increases life
- High efficiency: Consumes less fuel and requires less power from the engine
- Compact, lightweight design creates less drag and leaves more space in the engine compartment
- Performance-tested rotor (600 volts) and rectifier (300 volts)

UNIQUE CAPABILITIES

- Ability to parallel more than one alternator
- Custom drive systems for virtually any application
- Rugged design intended to meet military standards



185 HPI Series Alternators

ELECTRICAL SPECIFICATIONS

Charge voltage set point	28.2 or custom
Efficiency	70+%
Excitation	OEM LIN connector to external regulator
Rated power	5 kW
Rated voltage (nominal)	28 VDC
Output current (nominal)	185 amps

MECHANICAL SPECIFICATIONS

Cooling	Internal fans
Mount	Tangent
Pulley	Application specific
Regulator	External, custom
Rotation	CW
Weight	17 pounds / 8 kg

In-demand applications

Don't see your vehicle? Please contact us directly for solutions.

FORD

E-Series, Expedition, F-Series, Ranger, Vans

GMC

Sierra, Suburban, Tahoe

JEEP

Grand Cherokee

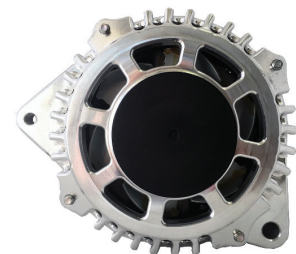
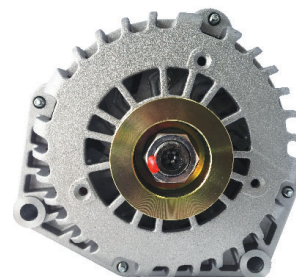
RAM

Trucks, Vans

TOYOTA

Petrol & Diesel Engines

Hilux, Land Cruiser



Alternator testing completed under ambient conditions, with stator temperature stabilized.

American Power Systems, Inc.

426 West Second Street | Davenport, Iowa 52801 | United States

International: +1 (563) 323-7994 | Domestic Toll-Free: (866) 446-8878 | E-mail: sales@americanpowerinc.com

www.americanpowerinc.com