

High Output Alternators

130 HPI Series | Secondary mount alternator

Dependable, High-Power Solutions

APS 130 HPI Series alternators provide stable output current for nominal 24 and 48VDC to power the on-vehicle equipment you need to get the job done.

Available for diverse applications in the secondary alternator position with APS bracketry, the 130 HPI Series also is used in conjunction with lithium-ion battery storage, which can integrate with virtually any vehicle.

Key Features

- Small slip-ring diameter prevents wear and increases life
- High efficiency: Consumes less fuel and requires less power from the engine
- Quick battery charging
- Compact, lightweight design creates less drag and leaves more space in the engine compartment
- Rugged design

Unique Qualities

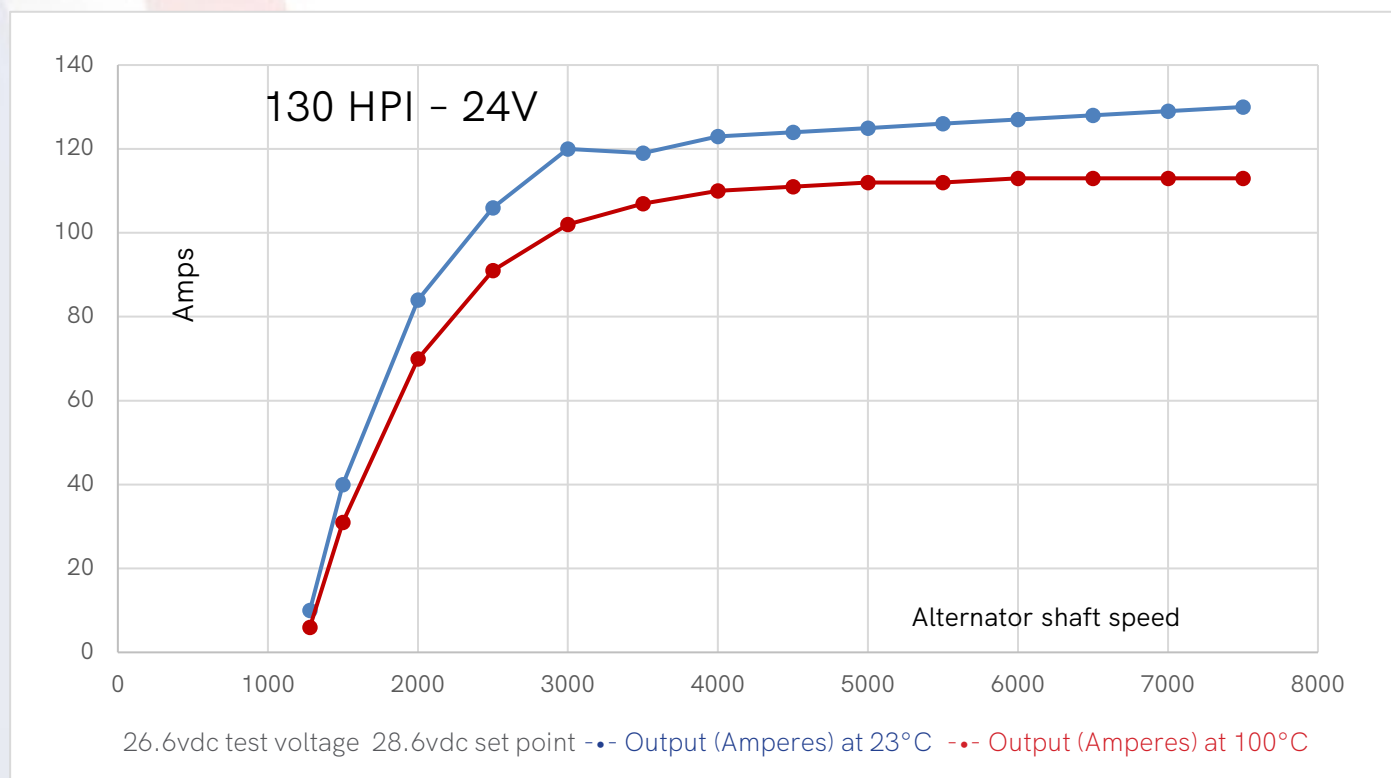
- Ability to parallel more than one alternator
- Custom drive systems for nearly any application
- Testing conditions completed at 23C ambient and 100C in a hot box to more closely simulate real-world use



**AMERICAN
POWER
SYSTEMS, INC.®**

HIGH OUTPUT ALTERNATORS

SERIES 130 HPI FTAN | Secondary mount alternator



Testing conditions completed at 23°C ambient and 100°C in a hot box.

ELECTRICAL SPECIFICATIONS

Output Rating at 100°C	6/113 26.6V
Output at 1280 RPM	6 amps
Output at 7500 RPM	113 amps
Tested at Voltage	26.6V
Regulator Interface	External
Efficiency at 23°C	70% typical
Isolated Ground	NO/YES
Brushed/Brushless	Brushed

MECHANICAL SPECIFICATIONS

Mounting Types	OE/Tangent/GM/Saddle
Rotation	CW
Housing Material	Cast aluminum bare
Positive Connection	M8 X 1.25
Negative Connection	Case ground M8 X 1.25
Shaft Diameter	17mm
Pulley	Per application

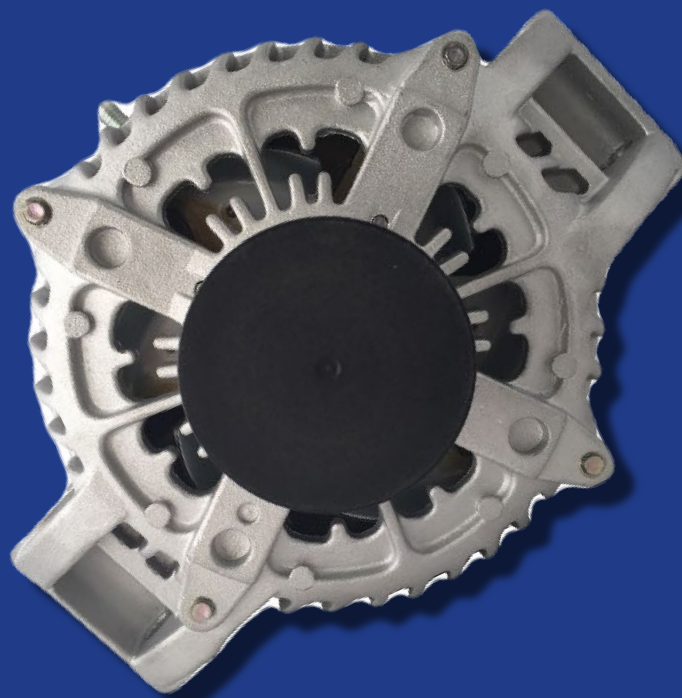
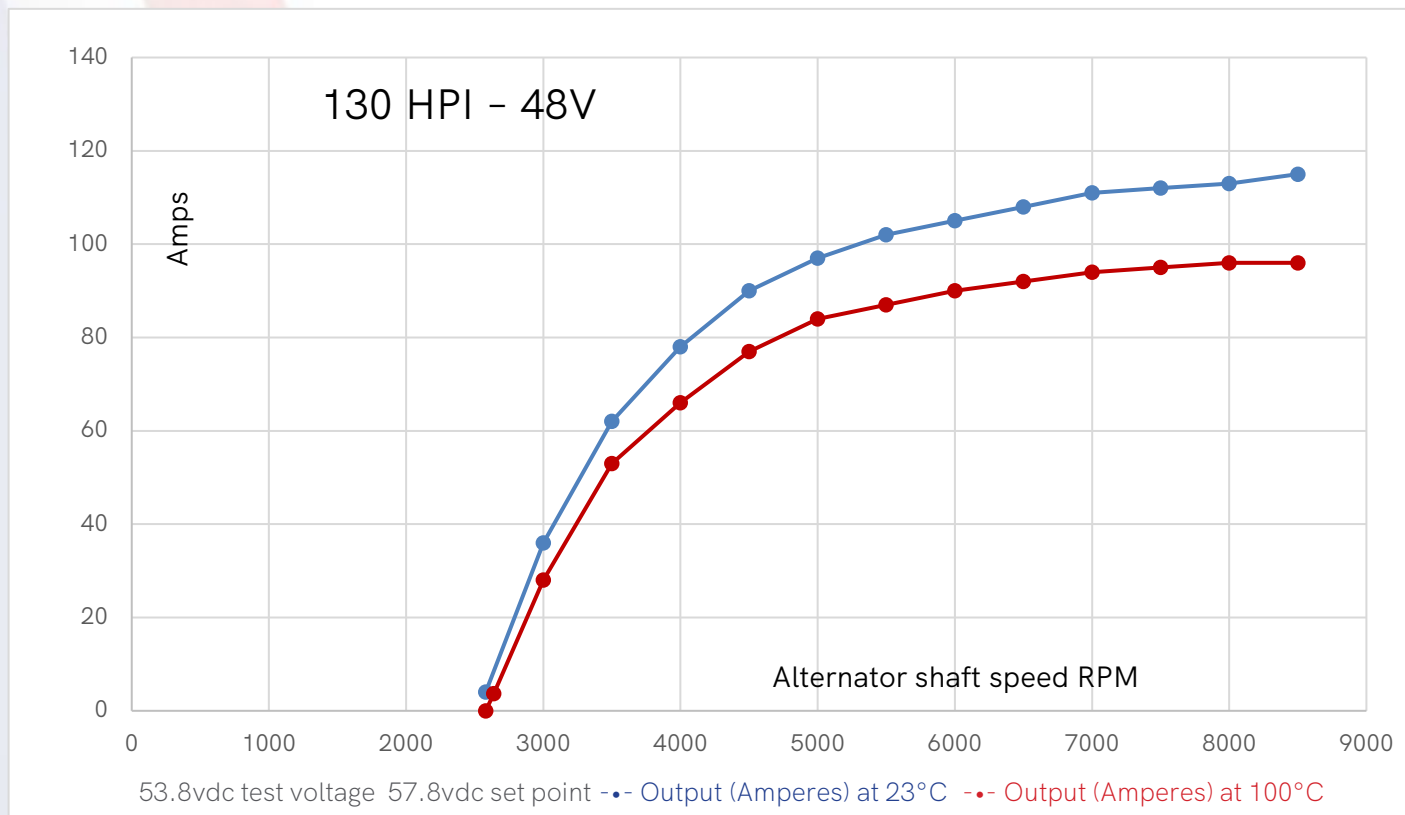


Photo for illustrative purposes only



HIGH OUTPUT ALTERNATORS

SERIES 130 HPI | Secondary mount alternator



Testing conditions completed at 23°C ambient and 100°C in a hot box.

ELECTRICAL SPECIFICATIONS

Output Rating at 100°C 3.7/96 53.8V

Output at 2640 RPM 3.7 amps

Output at 8500 RPM 96 amps

Tested at Voltage 53.8V

Regulator Interface External

Efficiency at 23°C 77% typical

Isolated Ground NO/YES

Brushed/Brushless Brushed

MECHANICAL SPECIFICATIONS

Mounting Types OE/Tangent/GM/Saddle

Rotation CW

Housing Material Cast aluminum bare

Positive Connection M8 X 1.25

Negative Connection Case ground
M8 X 1.25 (IG)

Shaft Diameter 17mm

Pulley Per application

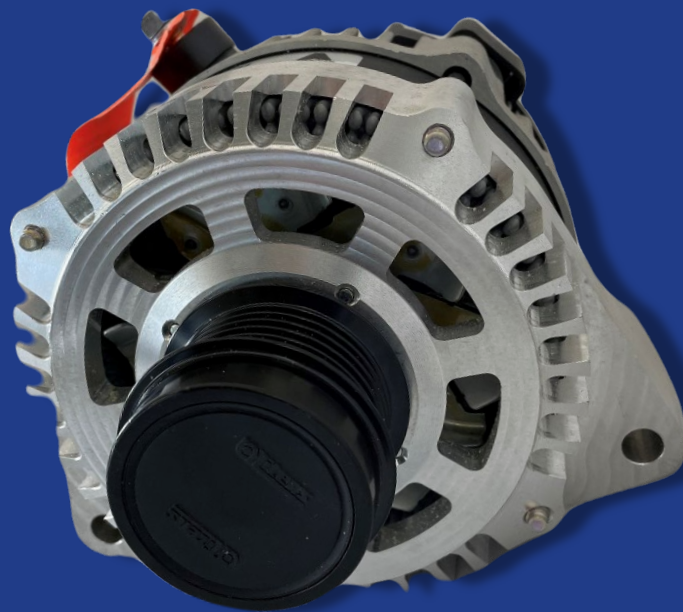


Photo for illustrative purposes only

