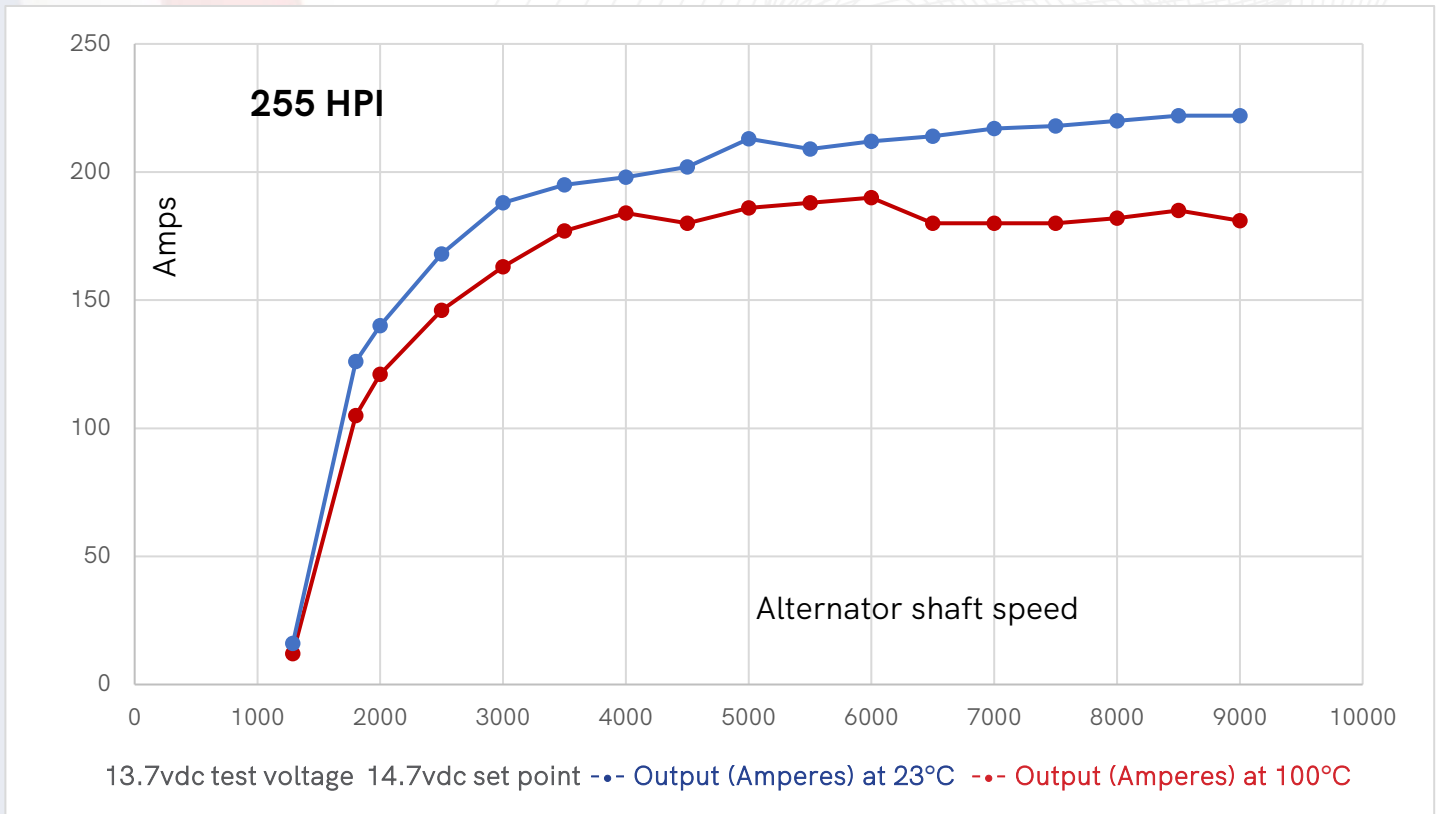


HIGH OUTPUT ALTERNATORS

SERIES 255 HPI | PART #255HN621H652S9C



Testing conditions completed at 23°C ambient and 100°C in a hot box.

ELECTRICAL SPECIFICATIONS

Output Rating at 100°C	50/190 13.7
Output at 1500 RPMs	50 amps
Output at 6000 RPMs	190 amps
Tested at Voltage	13.7V
Regulator Interface	OE compatible
Efficiency at 23°C	60% typical
Isolated Ground	NO
Brushed/Brushless	Brushed

MECHANICAL SPECIFICATIONS

Mounting Type	OE
Rotation	CW
Housing Material	CNC aluminum
Positive Connection	M8 X 1.25
Negative Connection	Case ground
Shaft Diameter	17mm
Pulley	6 groove/52mm OAD
Weight	7.5kg typical

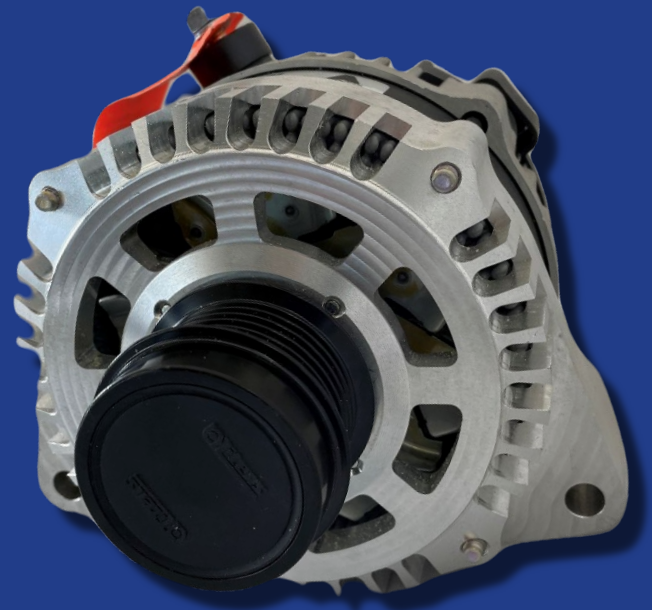


Photo for illustrative purposes only

