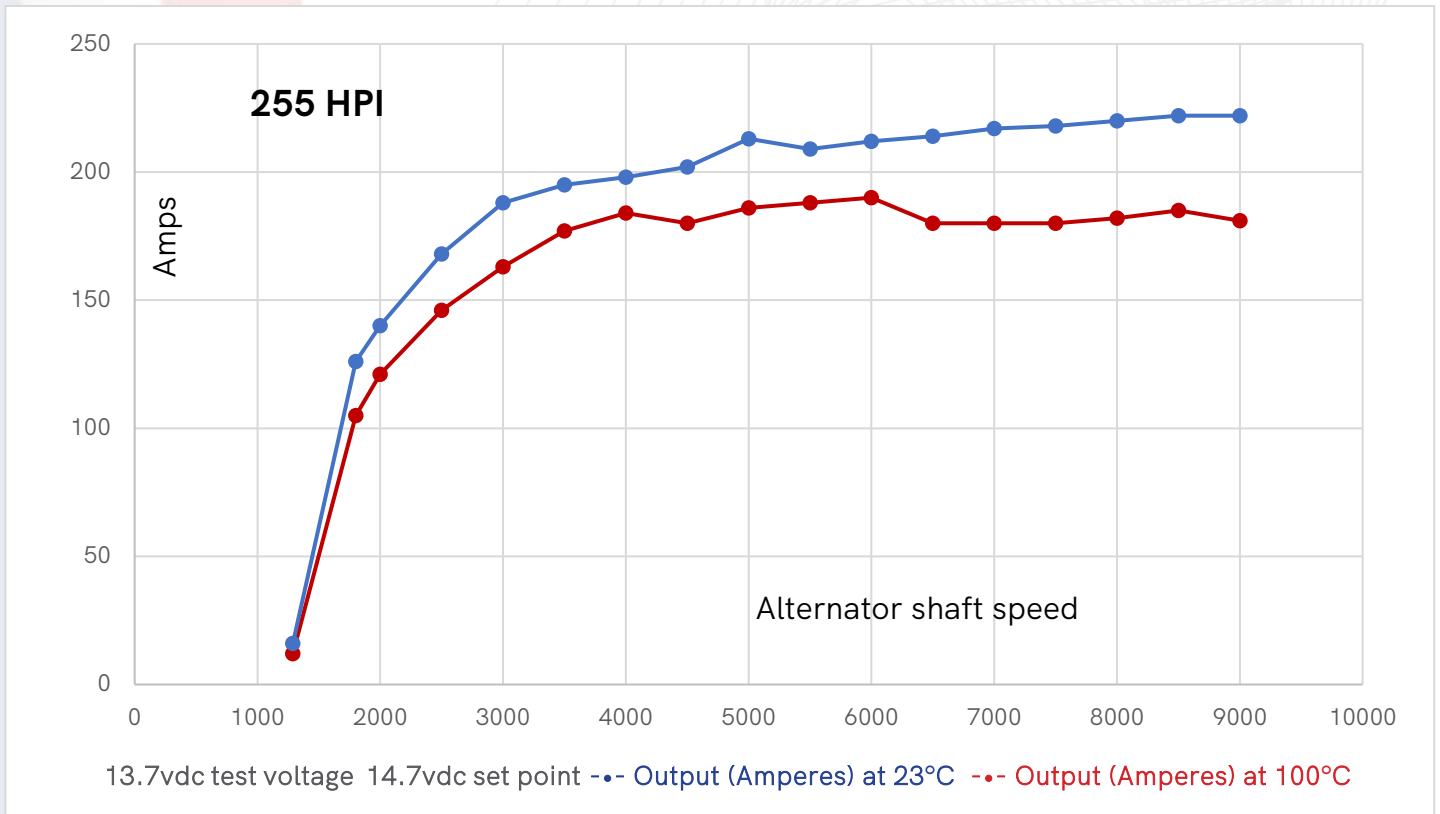


HIGH OUTPUT ALTERNATORS



SERIES 255 HPI | PART #255HN621H652S9CE4

Secondary mount alternator



Testing conditions completed at 23°C ambient and 100°C in a hot box.

ELECTRICAL SPECIFICATIONS

| | |
|------------------------|---------------|
| Output Rating at 100°C | 50/190 13.7 |
| Output at 1500 RPMs | 50 amps |
| Output at 6000 RPMs | 190 amps |
| Tested at Voltage | 13.7V |
| Regulator Interface | OE compatible |
| Efficiency at 23°C | 60% typical |
| Isolated Ground | NO |
| Brushed/Brushless | Brushed |

MECHANICAL SPECIFICATIONS

| | |
|---------------------|-------------------|
| Mounting Type | OE |
| Rotation | CW |
| Housing Material | CNC aluminum |
| Positive Connection | M8 X 1.25 |
| Negative Connection | Case ground |
| Shaft Diameter | 17mm |
| Pulley | 6 groove/52mm OAD |
| Weight | 7.0-7.5kg typical |

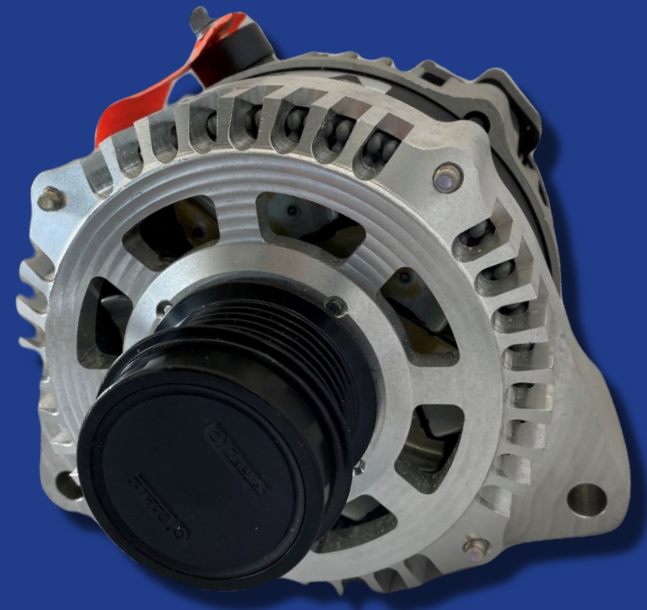


Photo for illustrative purposes only

