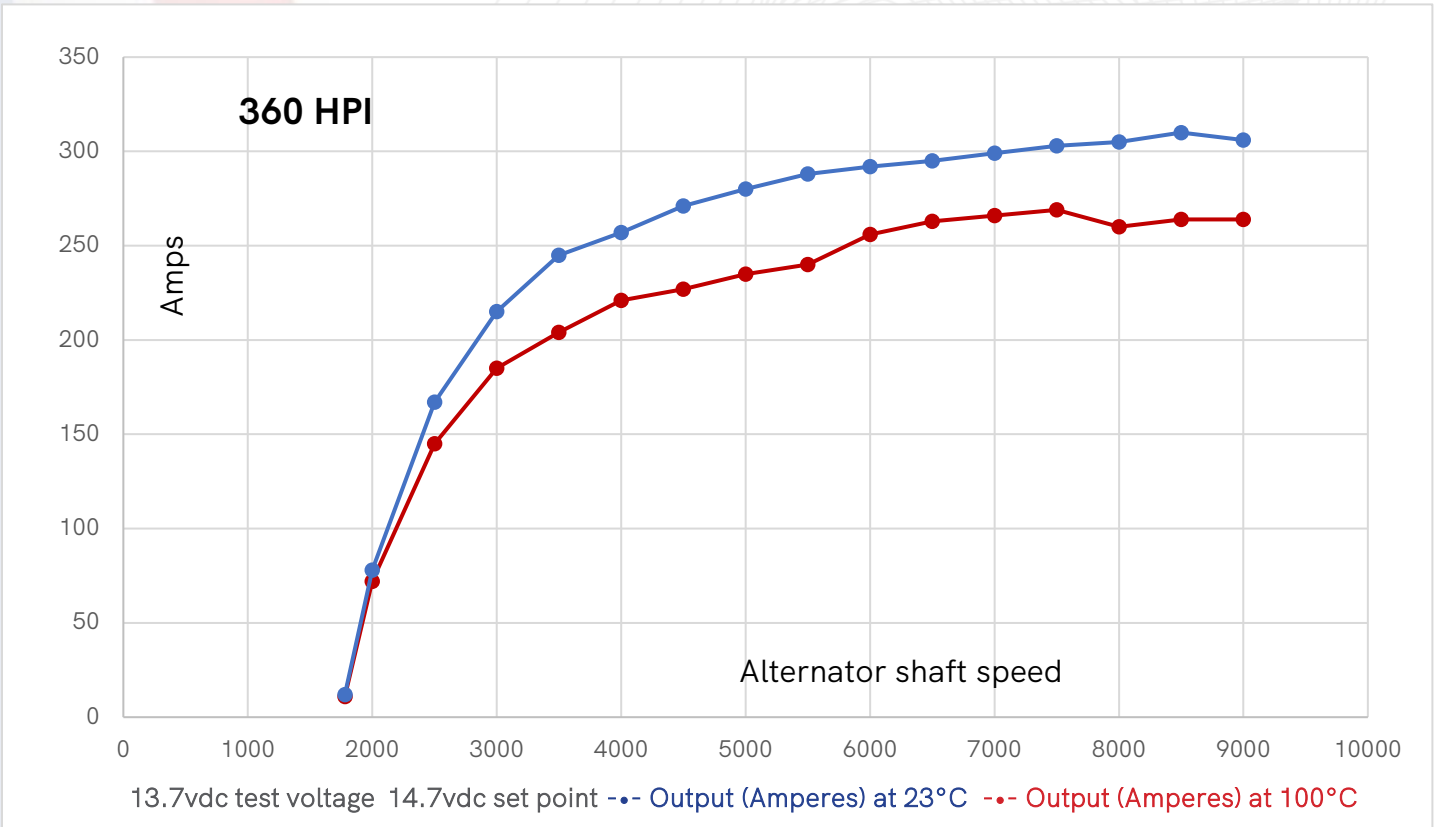


HIGH OUTPUT ALTERNATORS

SERIES 360 HPI FTAN | PART #360HFTAN1H652S9E4

Secondary mount alternator



Testing conditions completed at 23°C ambient and 100°C in a hot box.

ELECTRICAL SPECIFICATIONS

Output Rating at 100°C	50/256 13.7
Output at 1890 RPMs	50 amps
Output at 6000 RPMs	256 amps
Tested at Voltage	13.7V
Regulator Interface	External
Efficiency at 23°C	70% typical
Isolated Ground	NO
Brushed/Brushless	Brushed

MECHANICAL SPECIFICATIONS

Mounting Type	Tangent
Rotation	CW
Housing Material	Cast aluminum bare
Positive Connection	M8 X 1.25
Negative Connection	Case ground
Shaft Diameter	17mm
Pulley	6 groove/52mm
Weight	7.5kg typical

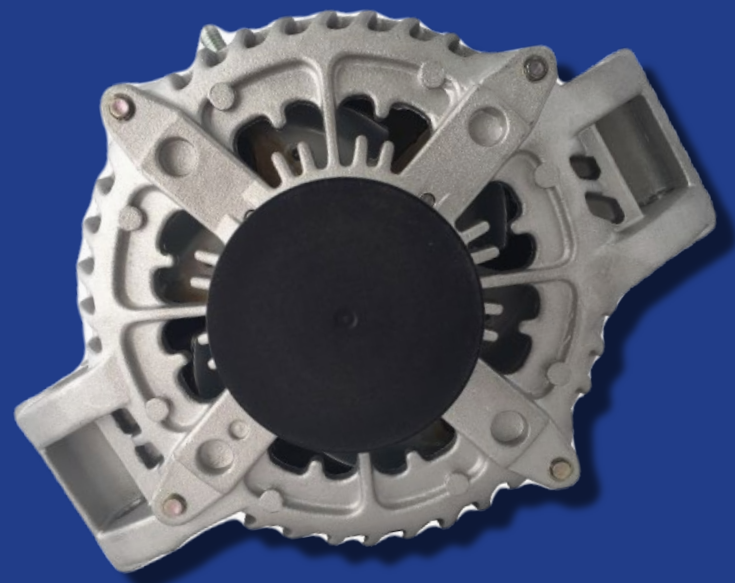


Photo for illustrative purposes only

