

High Output Alternators

55i Series | Large-frame vehicle/secondary mount

Dependable, High-Power Solutions

APS 55i Series alternators provide stable output current to power the on-vehicle equipment you need to get the job done.

For large-frame vehicles such as semi-trucks, buses, motorcoaches and others, 55i Series alternators also are used in the secondary alternator position with APS bracketry on large and standard vehicles. Alternators are available for J180 and pad mounts.

Key Features

- High-performance heat sink
- Custom drive systems available
- Internal/external regulator interface
- Rugged design
- More compact and lightweight than other large-case alternators

Unique Qualities

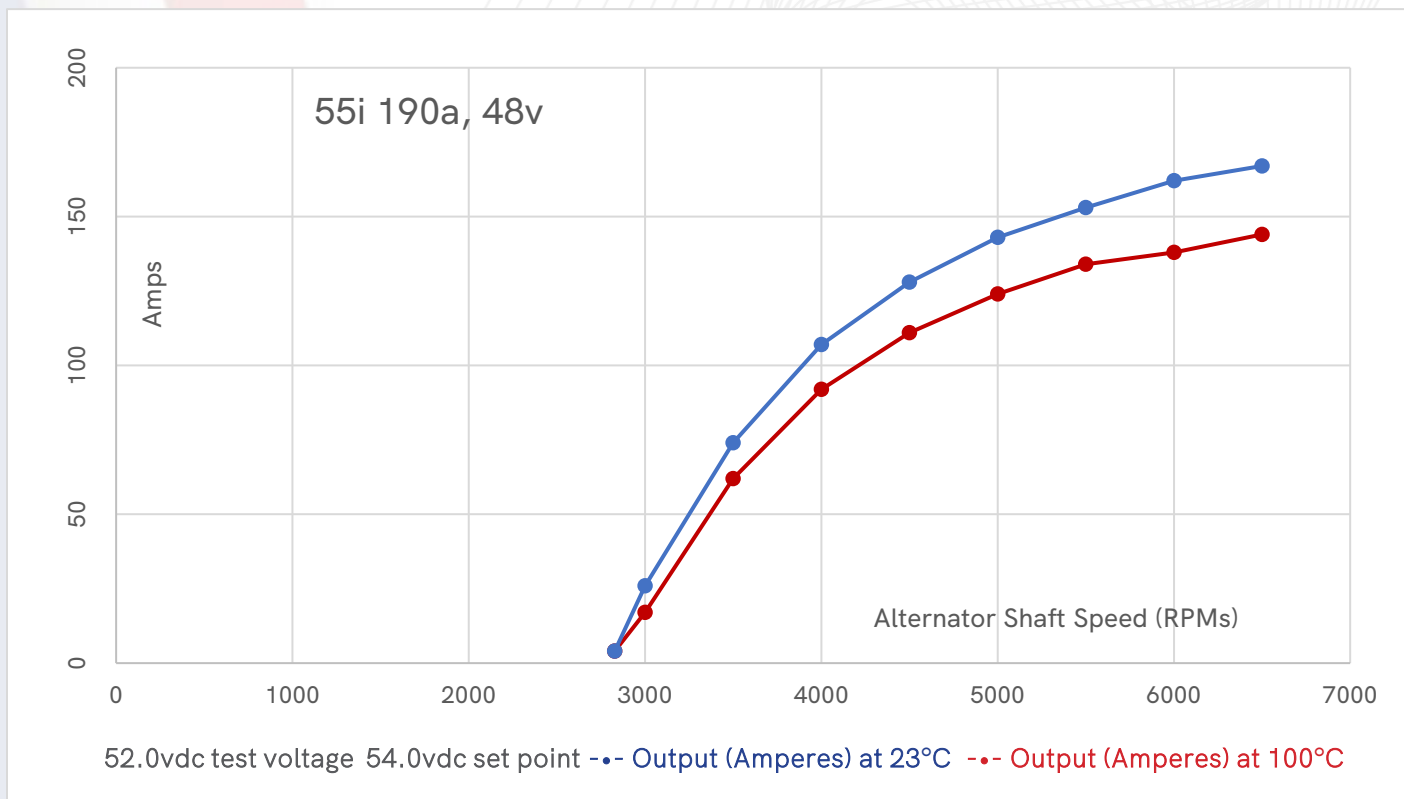
- Ability to parallel more than one alternator for additional clean, regulated DC power
- Testing conditions completed at 23C ambient and 100C in a hot box to more closely simulate real-world use



**AMERICAN
POWER
SYSTEMS, INC.**

HIGH OUTPUT ALTERNATORS

55i Series | Large-frame vehicle/secondary mount alternator



Testing conditions completed at 23°C ambient and 100°C in a hot box.

ELECTRICAL SPECIFICATIONS

Output Rating at 100°C 17/138 52.0

Output at 3000 RPMs 17 amps

Output at 6000 RPMs 138 amps

Tested at voltage 52.0V

Regulator Interface External

Efficiency at 23°C 68% typical

Isolated Ground NO

Brushed/Brushless Brushed

MECHANICAL SPECIFICATIONS

Mounting Type J180 or Pad

Rotation CW/CCW

Housing Material Cast aluminum bare

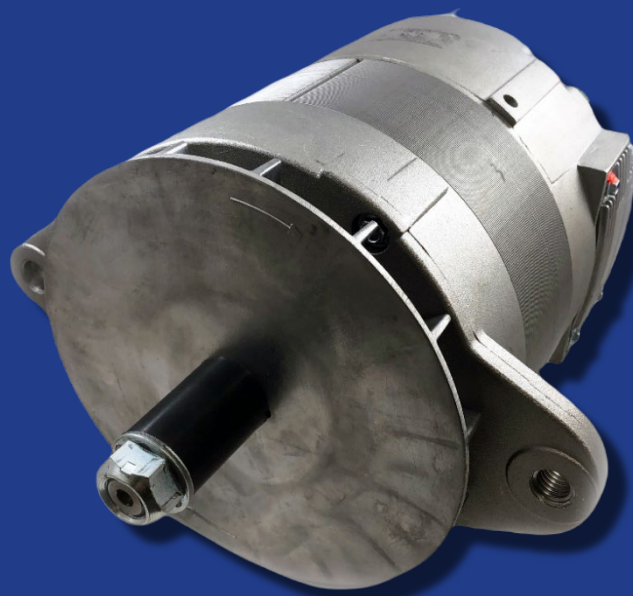
Positive Connection 5/16" - 18 (both mounts)

Negative Connection 3/8" - 16 (J180)
5/16" - 18 (Pad)

Shaft Diameter 22.225mm

Pulley Per application

Weight 15kg typical



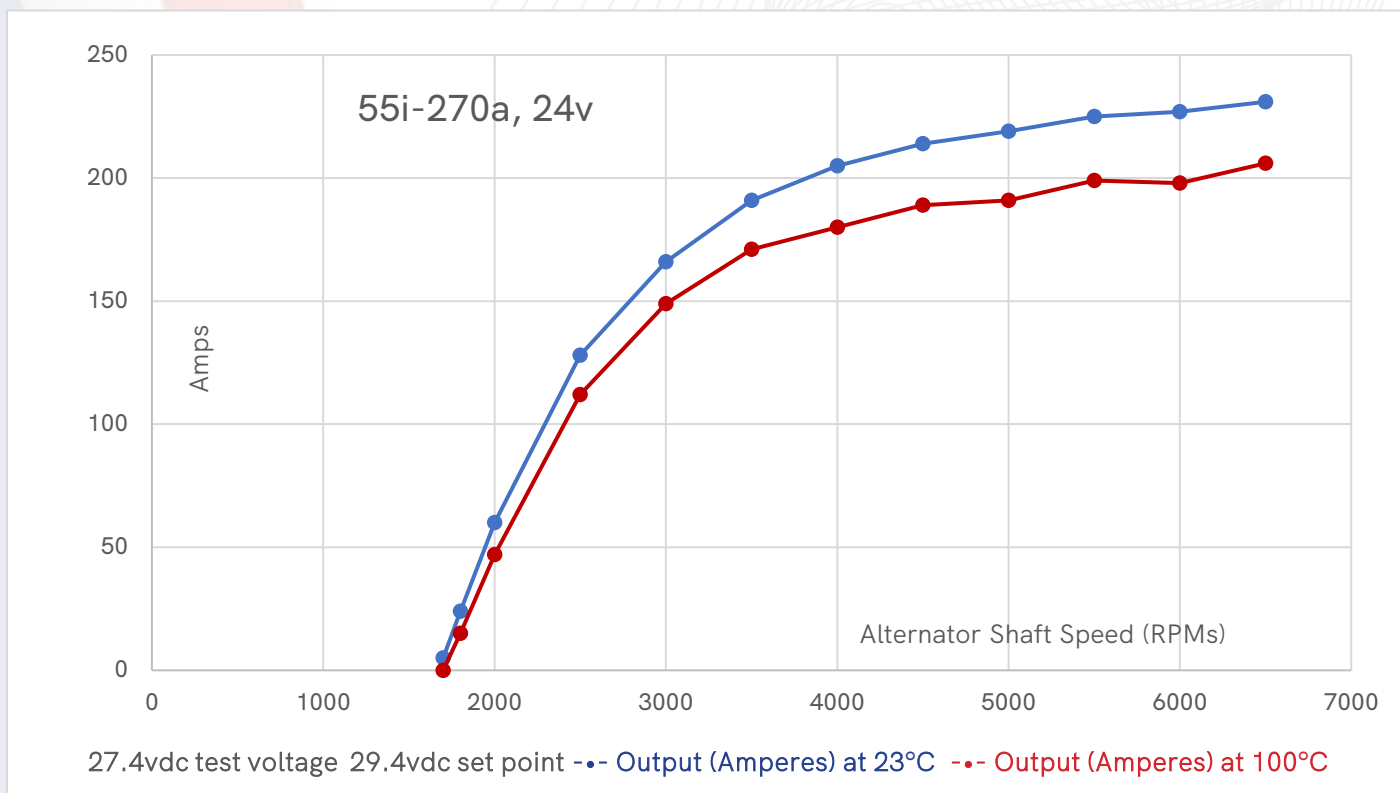
© 2022 American Power Systems, Inc. ®

426 West Second Street | Davenport, Iowa 52801
+1 (563) 323-7994 | sales@americanpowerinc.com
www.americanpowerinc.com

Revised October 2022

HIGH OUTPUT ALTERNATORS

55i Series | Large-frame vehicle/secondary mount alternator



Testing conditions completed at 23°C ambient and 100°C in a hot box.

ELECTRICAL SPECIFICATIONS

Output Rating at 100°C 15/198 27.4

Output at 1800 RPMs 15 amps

Output at 6000 RPMs 198 amps

Tested at voltage 27.4V

Regulator Interface External or internal

Efficiency at 23°C 65% typical

Isolated Ground NO

Brushed/Brushless Brushed

MECHANICAL SPECIFICATIONS

Mounting Type J180 or Pad

Rotation CW

Housing Material Cast aluminum bare

Positive Connection 5/16" - 18 (both mounts)

Negative Connection 3/8" - 16 (J180)

5/16" - 18 (Pad)

Shaft Diameter 22.225mm

Pulley Per application

Weight 15kg typical



© 2022 American Power Systems, Inc. ®

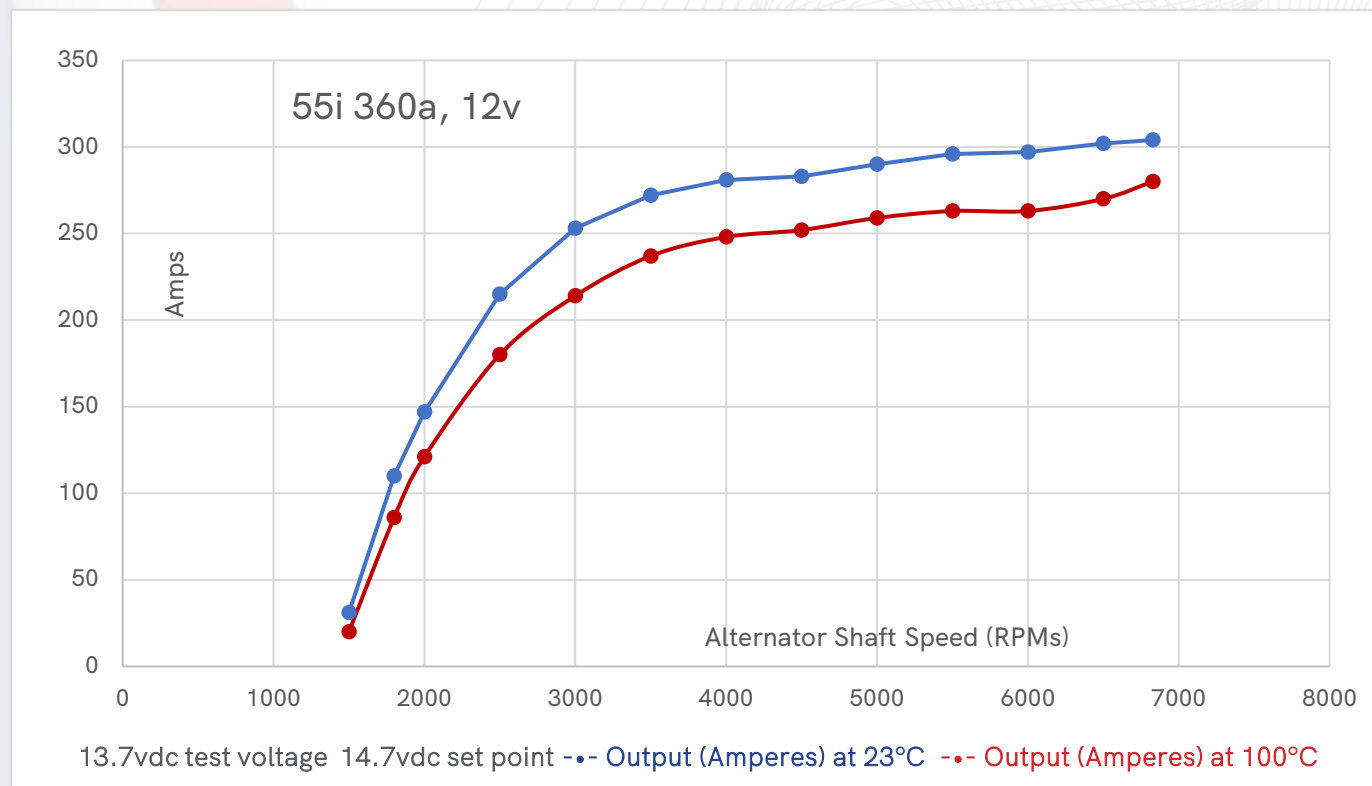
426 West Second Street | Davenport, Iowa 52801
+1 (563) 323-7994 | sales@americanpowerinc.com

www.americanpowerinc.com

Revised October 2022

HIGH OUTPUT ALTERNATORS

55i Series | Large-frame vehicle/secondary mount alternator



Testing conditions completed at 23°C ambient and 100°C in a hot box.

ELECTRICAL SPECIFICATIONS

Output Rating at 100°C	20/263 13.7
Output at 1500 RPMs	20 amps
Output at 6000 RPMs	263 amps
Tested at voltage	13.7V
Regulator Interface	Internal (ignition excitation)
Efficiency at 23°C	60% typical
Isolated Ground	NO
Brushed/Brushless	Brushed

MECHANICAL SPECIFICATIONS

Mounting Type	J180 or Pad
Rotation	CW/CCW
Housing Material	Cast aluminum bare
Positive Connection	5/16" - 18 (both mounts)
Negative Connection	3/8" - 16 (J180) 5/16" - 18 (Pad)
Shaft Diameter	22.225mm
Pulley	Per application
Weight	15kg typical



Photo for illustrative purposes only



© 2022 American Power Systems, Inc. ®

426 West Second Street | Davenport, Iowa 52801
+1 (563) 323-7994 | sales@americanpowerinc.com
www.americanpowerinc.com

Revised October 2022